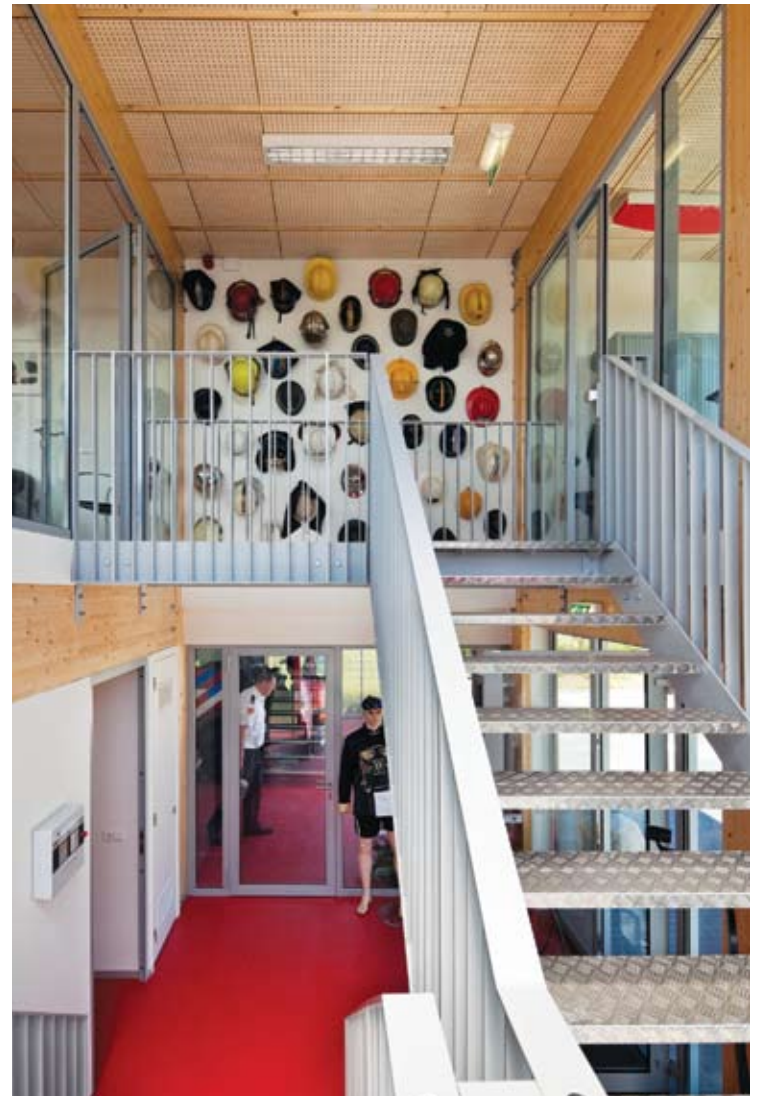




01



02

### New Fire Station

This fire station is situated on the edge of Houten, in allotments along the De Kruisboog road. Wood and transparent materials inspired by greenhouse architecture were translated into the building in a contemporary manner. The building is robust, despite the fragile nature of the cladding material. It features a timber supporting structure with double walls of transparent plastic sheets and black recycled plastic. The design is one of a simple beauty; it not only looks attractive, but is also extremely sustainable and durable. The choice for a materialization in wood and recycled plastic, with sober and clean detailing, resulted in significant savings in material usage and expenses.

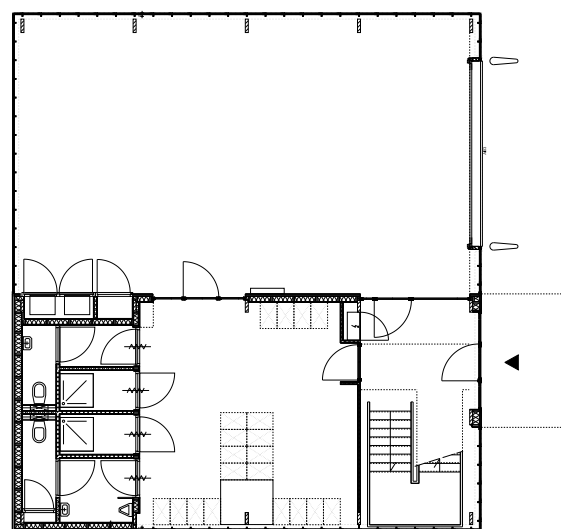
01 Fire truck | 02 Interior view | 03 Exterior view | 04 Firefighters' area | 05 Ground floor plan



03



04



05